

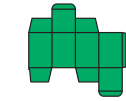


Customer: **SCOTTS MIRACLE GROW** Cust #: **9389**
Product: **SCOTT'S FLY WINDOW STICKERS**
Board: **SBS .018 Caliper**

Designer: **Becky Zinck**

Scale: **1**
Area Inch² **143.67**

Linear Inches **136.691**
Weight - oz **1.06**



printed Side Up.

Sample Request #:

7132013

Size: 9.750 x4.875 x0.000

O/All: 13.187 X 15.375

GPI Drawing Number:

X906968F

Previous Ref#:

X906968C

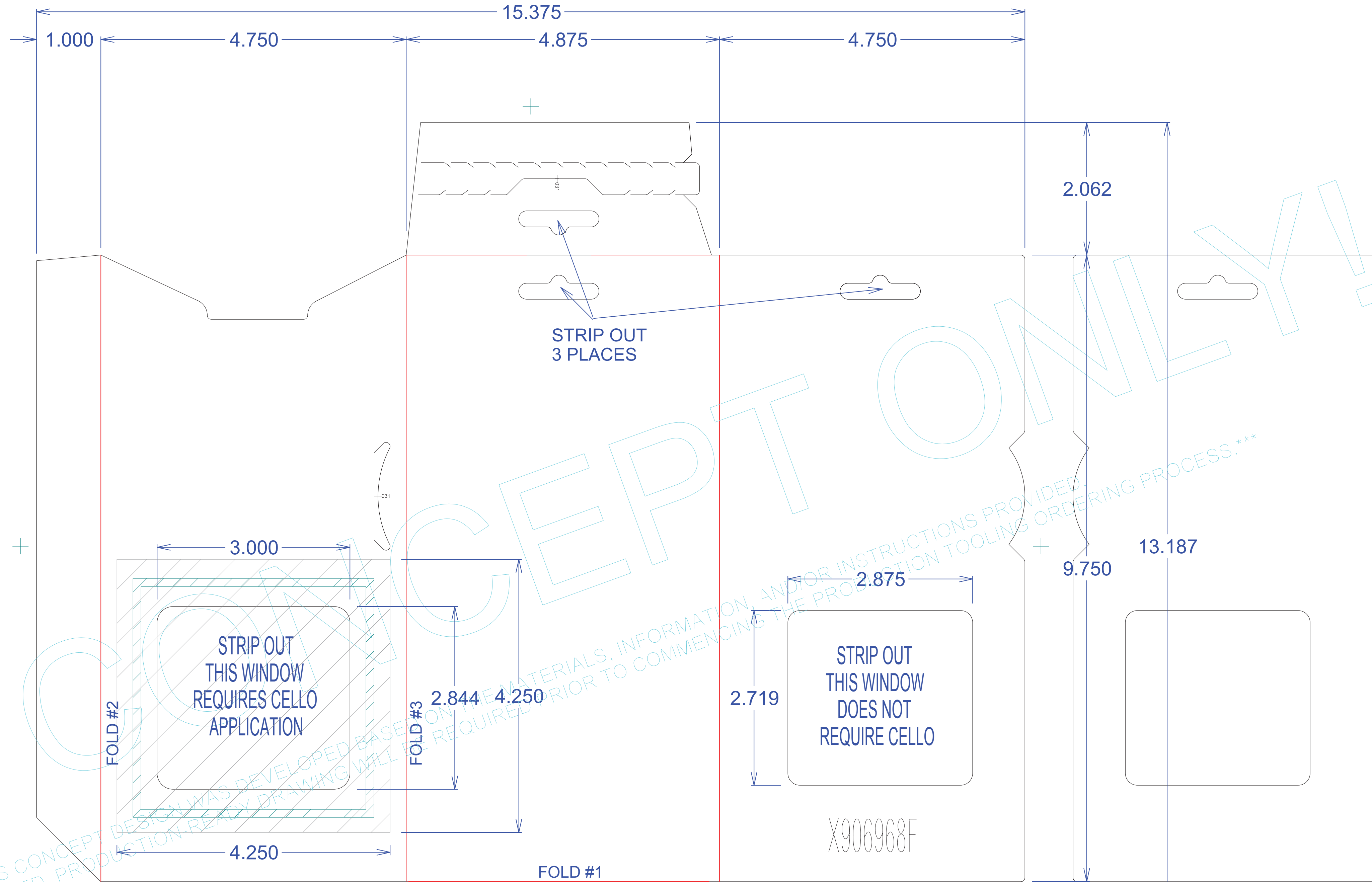
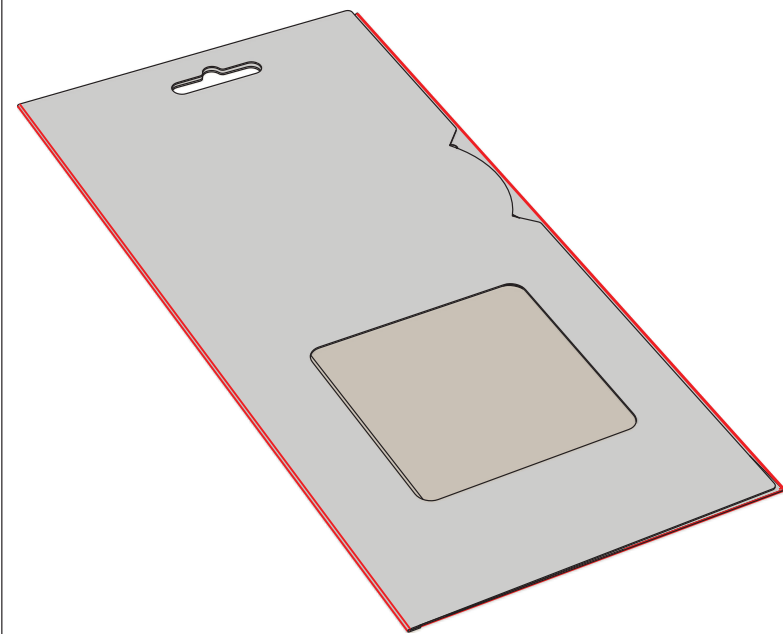
Date:

11/29/2011

Shape: 023 - Sleeve - U Board,Window / Apperture

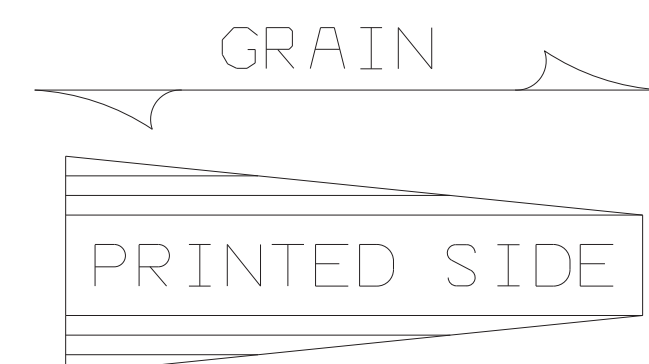
Preferred Gr: horizontal

This DRAWING is submitted in confidence and remains the property of **GRAPHIC PACKAGING INTERNATIONAL** who claim copyright therein. No reproduction can be made without their written permission.Ⓒ
The information provided herein is conceptual and provided solely for style and size checks.
Use of this information for product production is strictly prohibited and GPI disclaims all liability for such use of the information.



PLEASE NOTE: THIS CONCEPT DESIGN WAS DEVELOPED BASED ON THE MATERIALS, INFORMATION, AND/OR INSTRUCTIONS PROVIDED. PRODUCTION TOOLING REQUIRED PRIOR TO COMMENCING THE PRODUCTION ORDERING PROCESS.

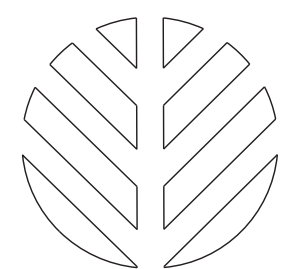
DESIGN ONLY
NOT FINAL PRODUCTION
GRAIN SPECIFIED
PRINTED SIDE

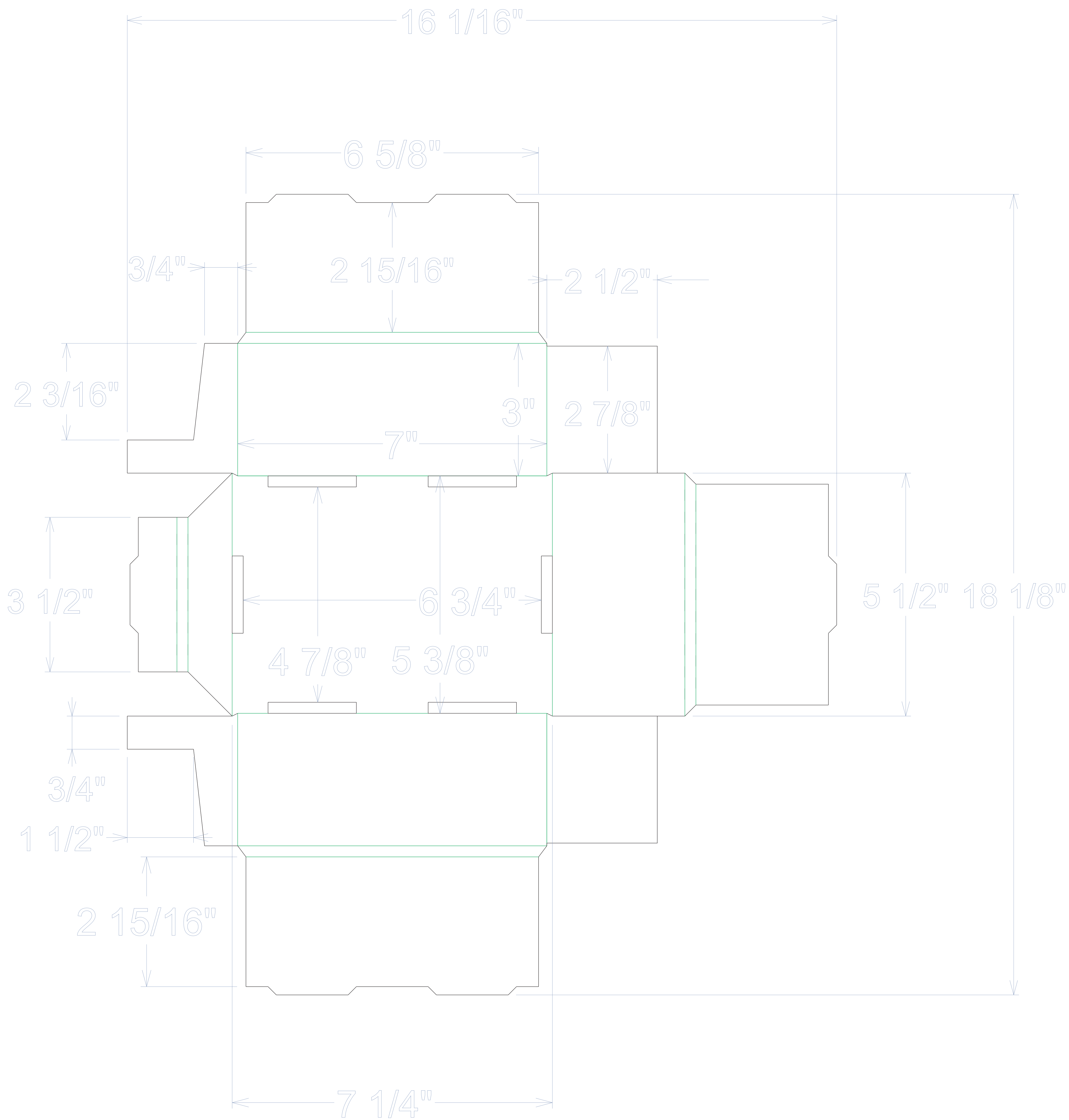


INSIDE
1
CBX
T: 212.404.7970
F: 212.404.7941
www.cbix.com
The CBX Worldwide Partnership, LLC
23 January 2012



Latest Rev.				V:\DESIGNS\CONCEPT\X906000			
REV TO "X906968C" - MODIFED SIZE AND MOVED WINDOW, MOVED TAB RECLOSE, CHG BOARD							
Initial Rev.		Rev. A		Rev. B			
Rev. C	REV TO "X906968B" - ADDED WINDOWS	Rev. D	REV TO "X906968C" - CHANGED DEPTH FROM 9.75 TO 10, ENLARGED*	Rev. E	REV TO "X906968D" - CHANGED BOARD FROM CRB TO SBS		
Rev. F	REV TO "X906968C" - MODIFED SIZE AND MOVED WINDOW, MOVED TAB*	Rev. G		Rev. H			
Rev. I		Rev. J		Rev. K			





Drawn at 100% scale from exterior